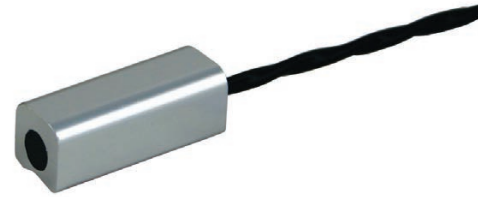


Standard executions			
Version	Circuit	Code	Item
Reed, 2 poles, with flying lead flexible cable 5 mt.		074047	ASH6C550



1

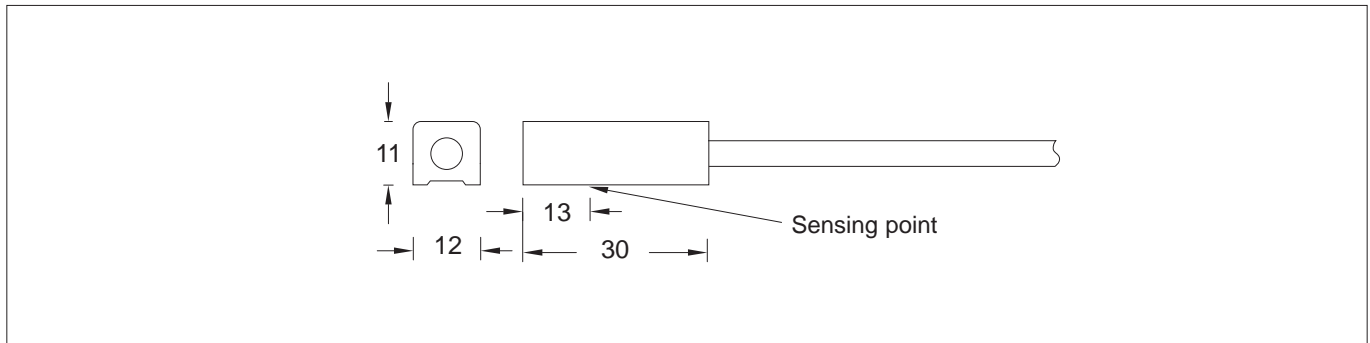
The magnetic reed switches are magnetic sensors responding to the presence of a magnetic field.

These sensors are specifically designed for high temperatures. When mounted on a cylinder tube they detect the presence of the magnetic field generated by the magnet set on the piston and so of the piston itself.

This information is used to signal electrical circuits as required. The sensor ASH can be applied only using a specific bracket.

For fixing brackets see page 1.120.1  
For coupling item / switches see pag. 1.120.5

For **ATEX** switches see page 1.110.10



Technical data	
Item	ASH6C550
Circuit	Reed, 2 poles
Switching	Normally open
Voltage	5 ÷ 240 V DC/AC
Switching current	500 mA max
Contact rating	10 W
Voltage drop	0,5 V max
Cable	Ø 3, 2C, Teflon
Temperature range	-10 °C ÷ +140°C
Protection class	IEC 60529 IP67