

# 22 mm. directly operated solenoid valves

## 1/8" and 1/4", 3/2, normally closed, electrically operated



Standard executions			
Version	Symbol	Code	Item
1/8", 3/2 N.C., with bistable manual override		034226	A1E130MD
1/4", 3/2 N.C., with bistable manual override		034227	A1E230MD
1/8", 3/2 N.C., with bistable manual override Ex nA		For code key see table below	
1/4", 3/2 N.C., with bistable manual override Ex nA			



Series of direct operated valves for mounting on the application (on cylinder or on rotary actuator, as shown in the examples at page 2.10.4).



On request, they can be supplied according to 2014/34/EU - ATEX

For versions conforming to ATEX 2014/34/UE Directive, classification Ex nA... see page 2.10.3

For further ATEX classifications ask to our sales department.

Options	Suffix
Low temperature seals (-25 ÷ +60°C)	BT
Seals FKM (-10°C ÷ +150°C)	V

Standard coils and connectors have to be ordered separately:  
 For the coils typer ASA12... vedi pag. 2.200.1  
 For connectors type A122... vedi pag. 2.210.20

### Code key for standard versions

Series	Actuation	Size	Function	Mounting	Options
A1	E = electrical	1 = 1/8" 2 = 1/4"	30 = 3/2 NC	MD = direct	BT = low temp. seals V = FKM seals

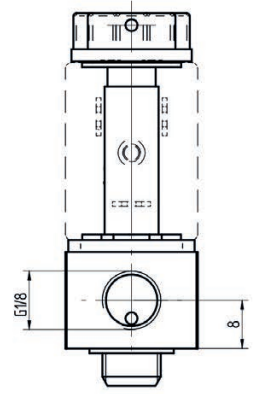
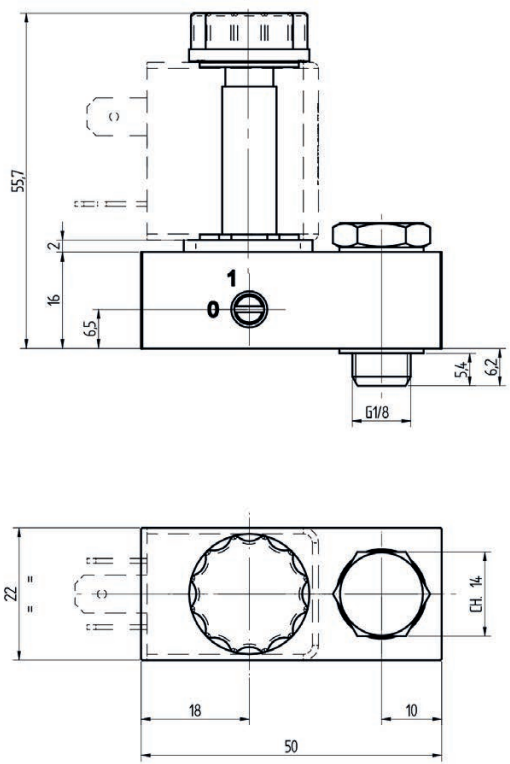
### Code key for ATEX versions

Series	Actuation	Size	Function	Mounting	Hazardous areas	Voltages	Options
A1	E = electrical	1 = 1/8" 2 = 1/4"	30 = 3/2 NC	MD = direct	XX = II 3G Ex nA IIC T5 Gc X II 3D Ex tc IIIC T95°C Dc X	B = 12 VDC C = 24 VDC * F = 24 VAC* I = 110 VAC * O = 220 VAC *	BT = low temp. seals V = FKM seals
* = Standard voltages							

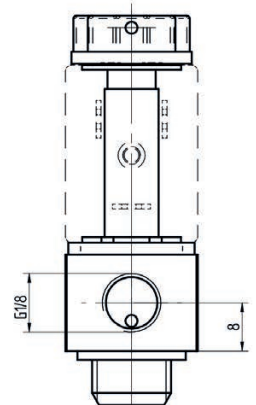
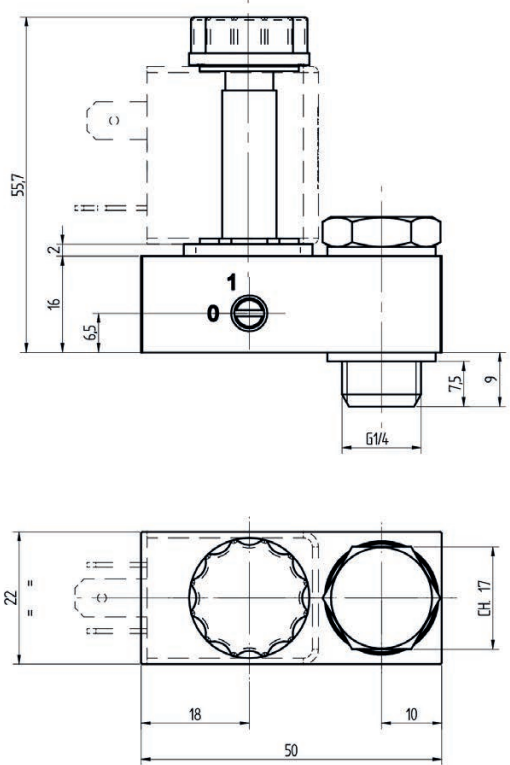
Technical data			
Fluid	Compressed filtered air, min. 5µm, with or without lubrication.		
Pressure range	0 ÷ 10 bar		
Temperature range	-10°C ÷ +60°C (standard)	-25°C ÷ +60°C (BT)	-10°C ÷ +150°C (V)
Orifice	1,2 mm.		
Flow	29 NI/min. at 6 bar ΔP 1 bar		
Weight	100 g.		
Mounting	In any position		
Materials	Base	Zinc alloy die cast	
	Tube	Brass	
	Coers	Steel AISI specific	
	Springs	Spring steel	
	Manual override	Nickel-plated brass	
	Locking nut	Plastic	
	Screws	Zinc plated steel	



22 mm. directly operated solenoid valves  
 1/8" and 1/4", 3/2, normally closed, electrically operated



Version	Symbol	Code	Item
1/8", 3/2 N.C., with bistable manual override		034226	A1E130MD



Version	Symbol	Code	Item
1/4", 3/2 N.C., with bistable manual override		034227	A1E230MD

Technical drawing of a 1/8 inch, 3/2 N.C. solenoid valve. The drawing includes a side view with dimensions: 16, 2, 6.5, 18, 50, 5.4, 6.2, 55.7, and G1/8. It also shows a top view with dimensions 10 and 22, and a detail of the coil with diameter CH. 14. The valve features a bistable manual override.

CE II 3G Ex nA IIC T5 Gc X  
 II 3D Ex tc IIIC T95°C Dc X

Version	Symbol	Code	Item
1/8", 3/2 N.C., with bistable manual override			A1E130MDXX..

Technical drawing of a 1/4 inch, 3/2 N.C. solenoid valve. The drawing includes a side view with dimensions: 16, 2, 6.5, 18, 50, 7.5, 9, 55.7, and G1/4. It also shows a top view with dimensions 10 and 22, and a detail of the coil with diameter CH. 17. The valve features a bistable manual override.

CE II 3G Ex nA IIC T5 Gc X  
 II 3D Ex tc IIIC T95°C Dc X

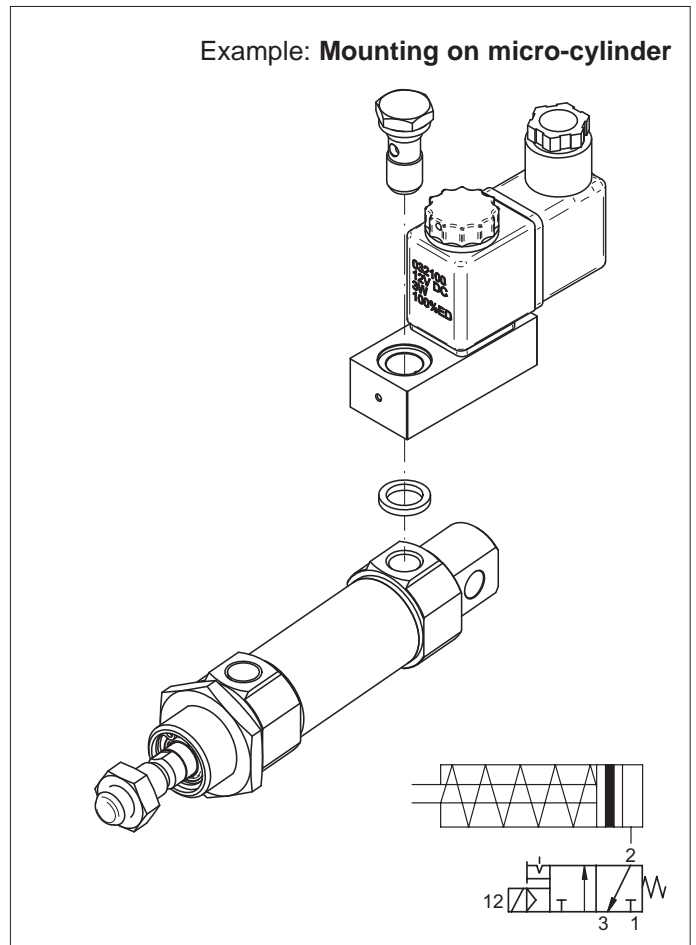
Version	Symbol	Code	Item
1/4", 3/2 N.C., with bistable manual override			A1E230MDXX..

## 22 mm. directly operated solenoid valves 1/8" and 1/4", 3/2, normally closed, electrically operated



Example of application of the direct control solenoid valve 22 mm. series A1EMD on a single-acting microcylinder series MSM.

The valves of this series can be directly mounted on the cylinder's connection without the use of intermediate pipes.



Example of application of the direct control solenoid valve 22 mm. series A1EMD on a single-acting rotary actuator series AR..SE.

The valves of this series can be directly mounted on the actuator connection without the use of intermediate pipes or plates.

